

**City of Palo Alto Building Division**  
**Smoke & Carbon Monoxide Alarms**

Example of Location for Smoke & CO alarms

REV. 4/1/11

**Legend**

- Photoelectric\* smoke alarms shall be installed on ceiling or wall at each floor level including basement but not including crawl spaces and uninhabitable attics, in each bedroom and outside each sleeping area in the immediate vicinity of the bedrooms. CRC R314

---

- ⊗ \* Dual sensor (Photoelectric/Ionization) alarms shall be used if located not less than 20 ft from a kitchen, fireplace or wood-burning stove. PAMC 16.06.090  
 Avoid locating dual sensor smoke alarms in the following locations:
  - a. Outside a bathroom
  - b. In a kitchen or within 20 ft of an entry to a kitchen.
  - c. In a room with a wood burning appliance or within 20 ft of an entry to a room containing a wood burning appliance.
  - d. In a garage or mechanical room/closet.

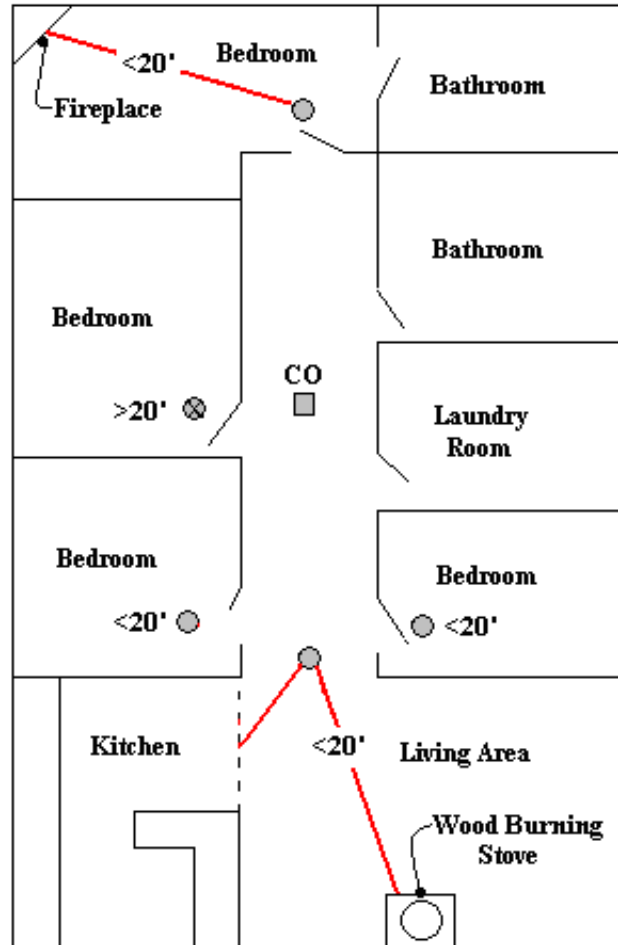
---

- Carbon Monoxide (CO) Alarms  
 When gas burning appliances or an attached garage is present, carbon monoxide alarms shall be installed outside each separate sleeping area in the immediate vicinity of the bedroom(s), and on each additional story, including basements and habitable attics. CRC R315

Greater than (>)  
 Less than (<)

**Special Considerations:**

Hallways over 40 ft in length need a smoke alarms at each end. Smoke detectors are either to be ceiling or wall mounted. Wall mounted smoke alarms are not to be located lower than 12 inches below the ceiling. Smoke alarms are not to be mounted within 4 inches of a wall/ceiling corner.  
 Install per manufacturer's installation instructions



**Alarm requirements:**

- Smoke alarms shall be listed UL 217 and California State Fire Marshal listed
- Carbon monoxide (CO) alarms shall be listed UL 2034 and UL 2075
- Combination carbon monoxide alarms combined with smoke alarms shall be California State Marshal listed.
- Go to [California State Fire Marshal](http://www.fire.ca.gov) website for the current list of approved State Fire Marshal smoke and CO alarms